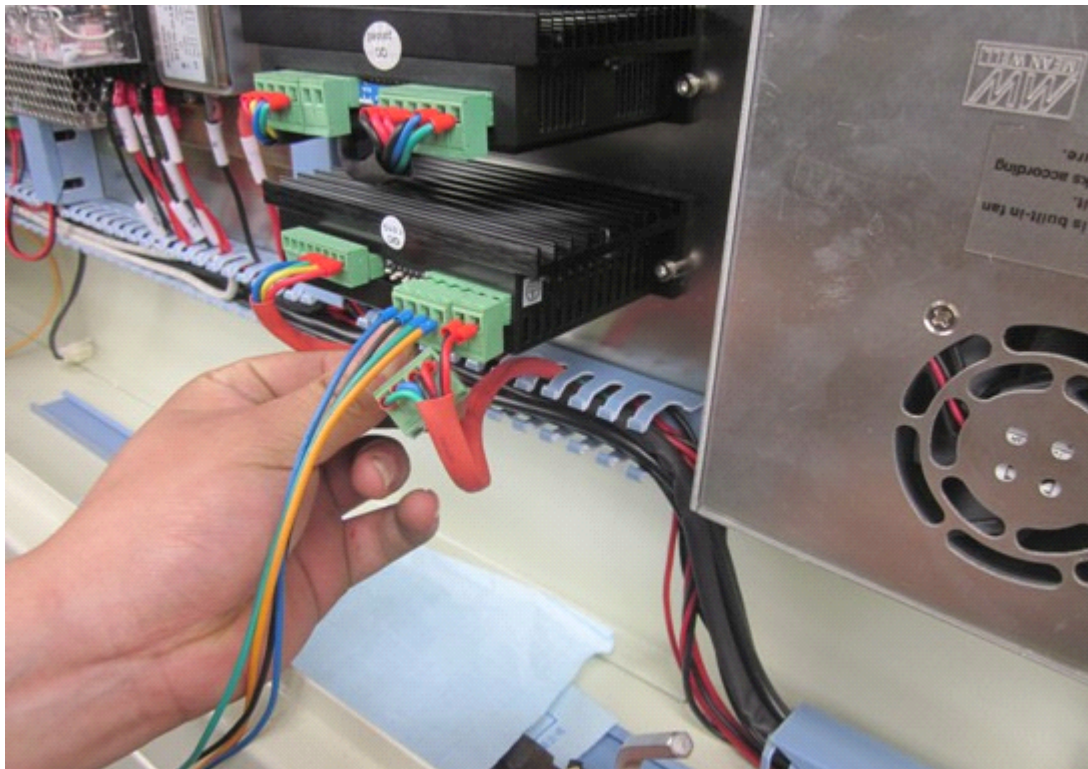
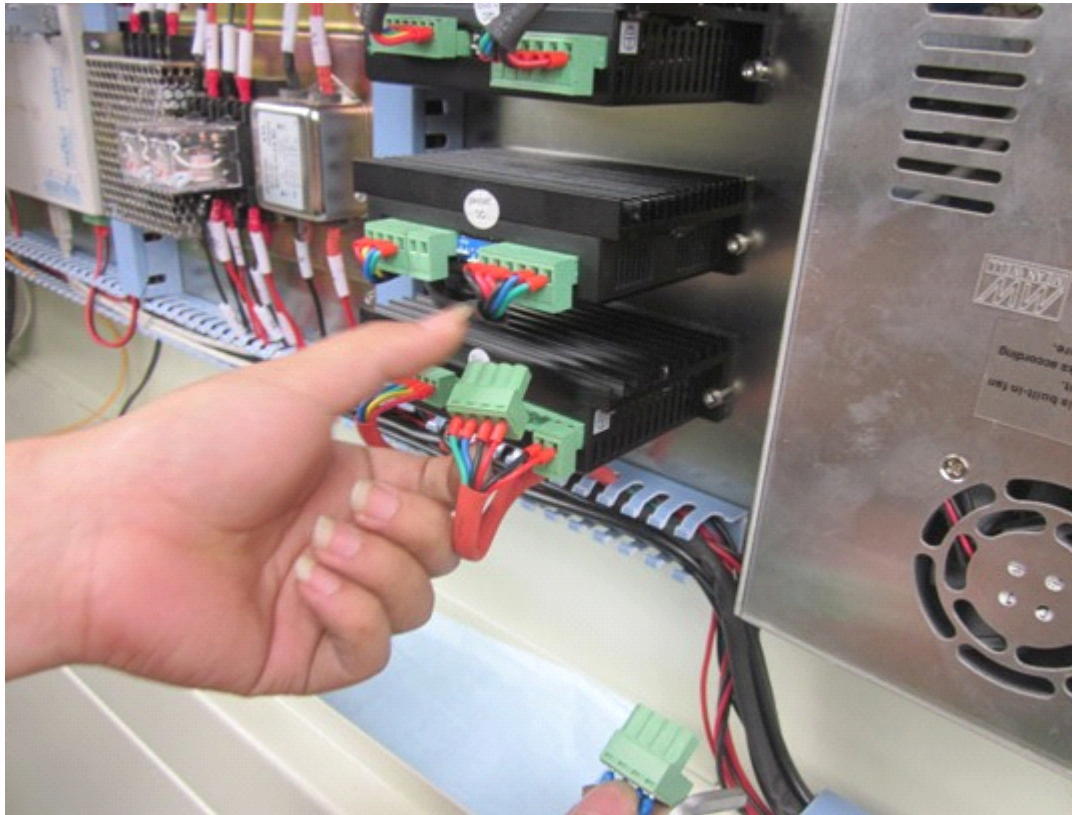
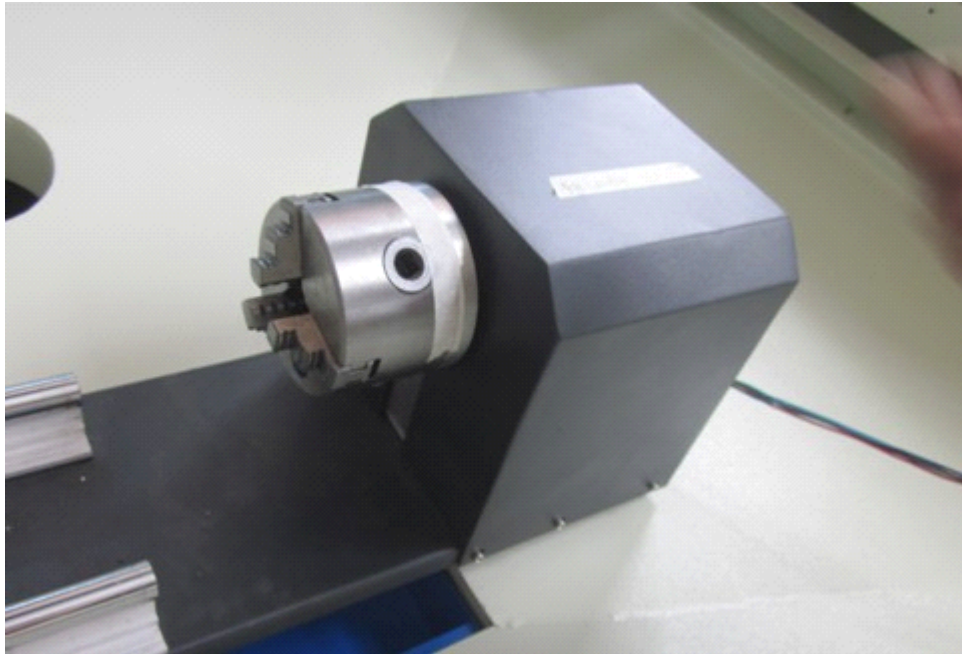


How to use ?

1.Change into rotary connection.

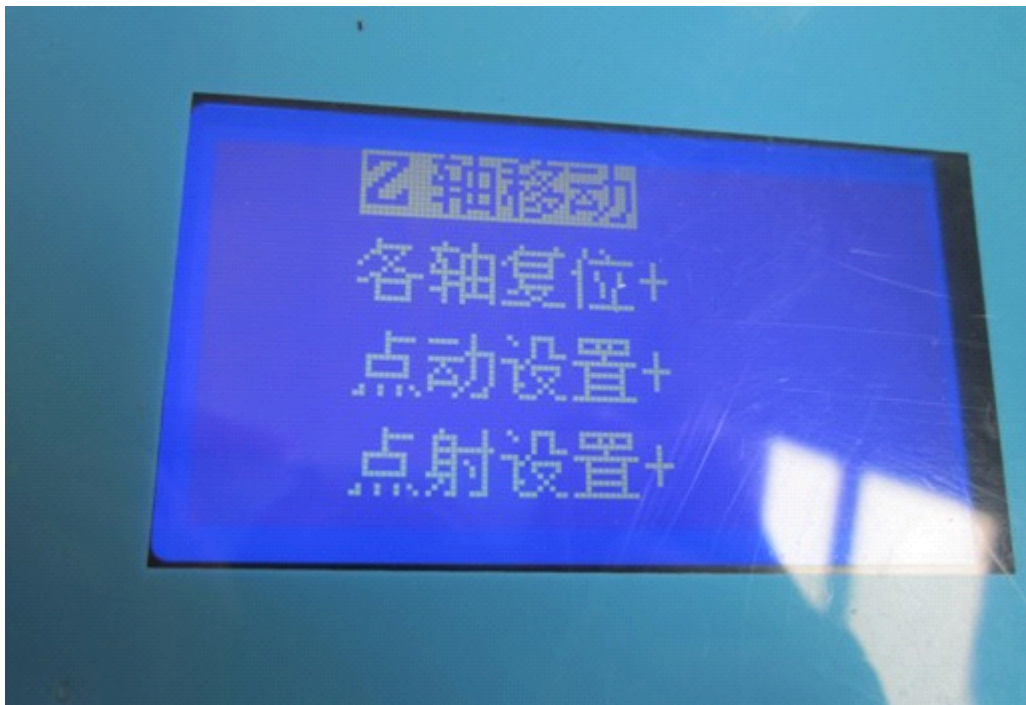


2.Put a Sticker on the rotary attachment.(mark a sign at the beginning place)



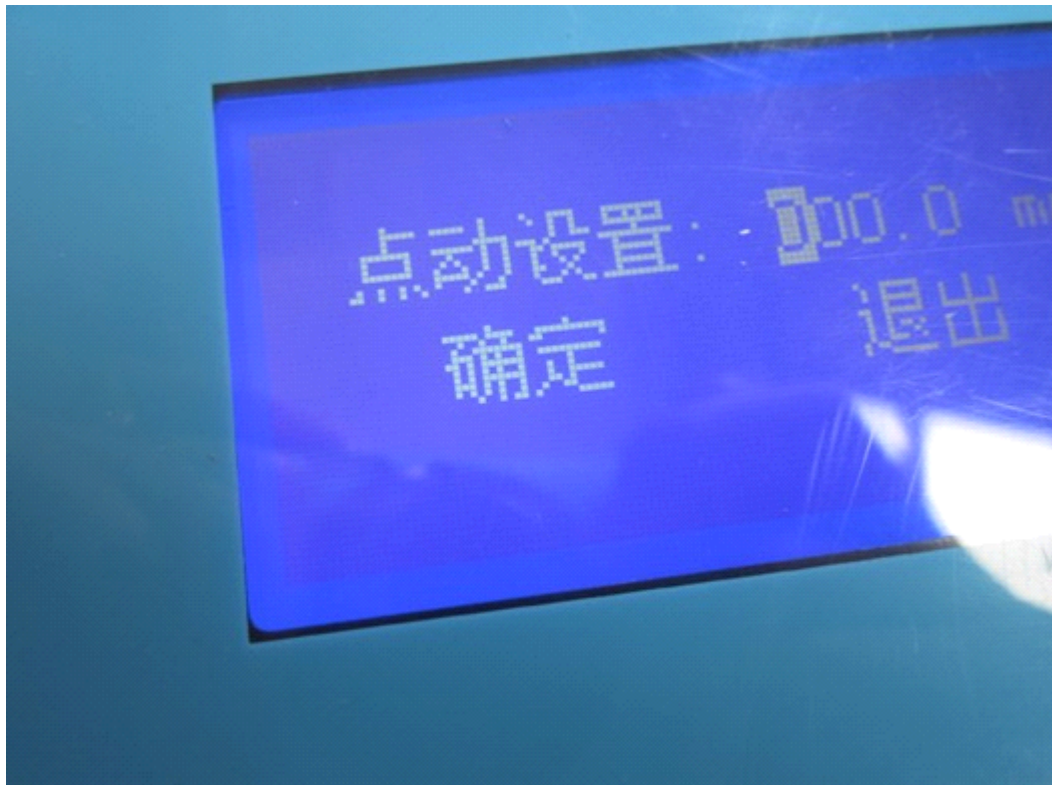
3.Adjust the DSP control board

Click--**Z axis moving** ----**Jogging Settings**---confirm--Exit

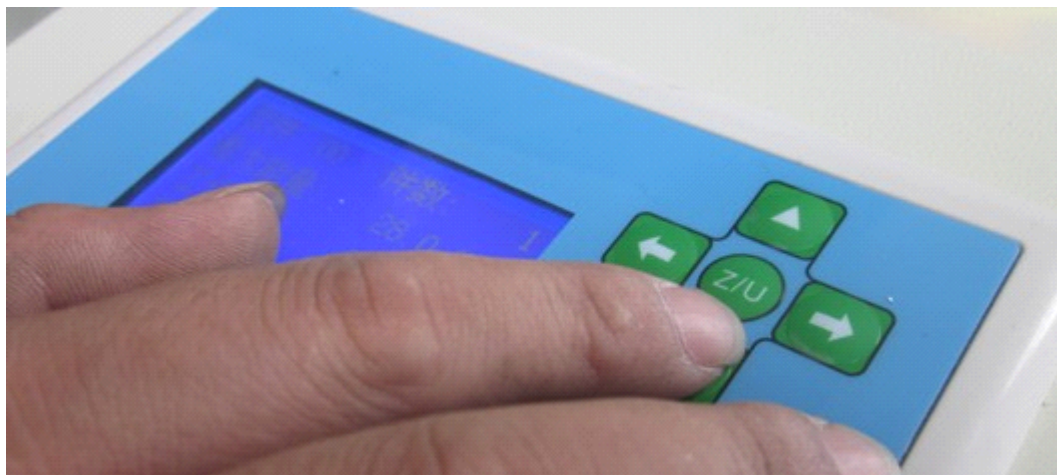


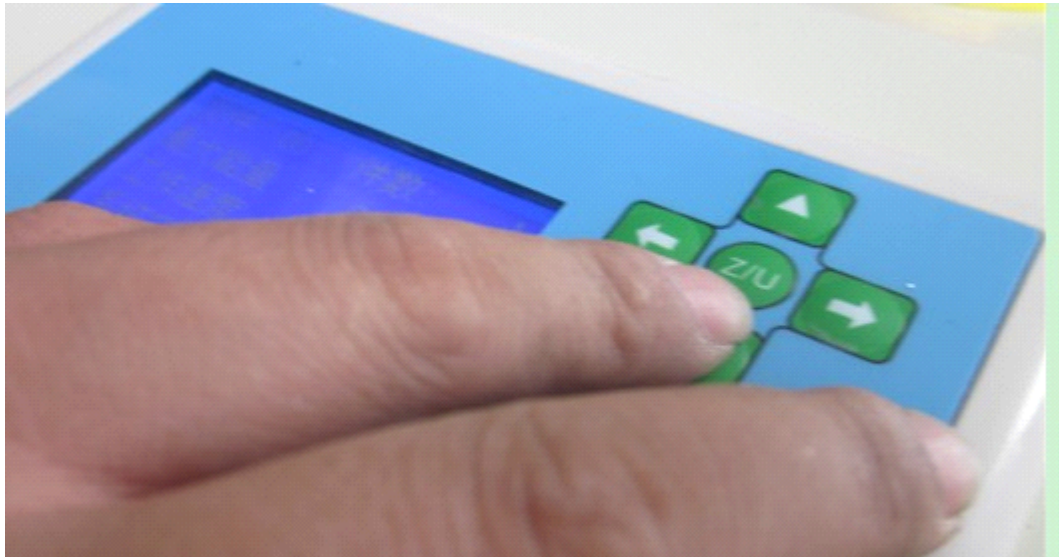


**\*Below photo for Jogging Settings ( Setting any distance )**

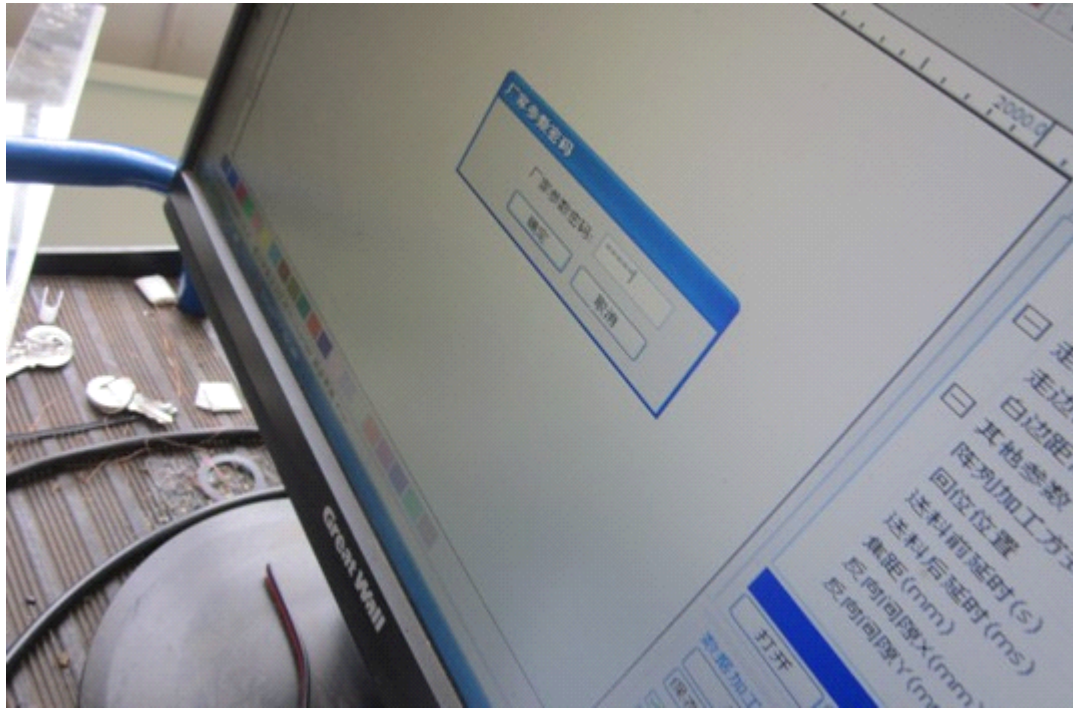


4. Click "Laser" for Up & Down (Arrow keys)

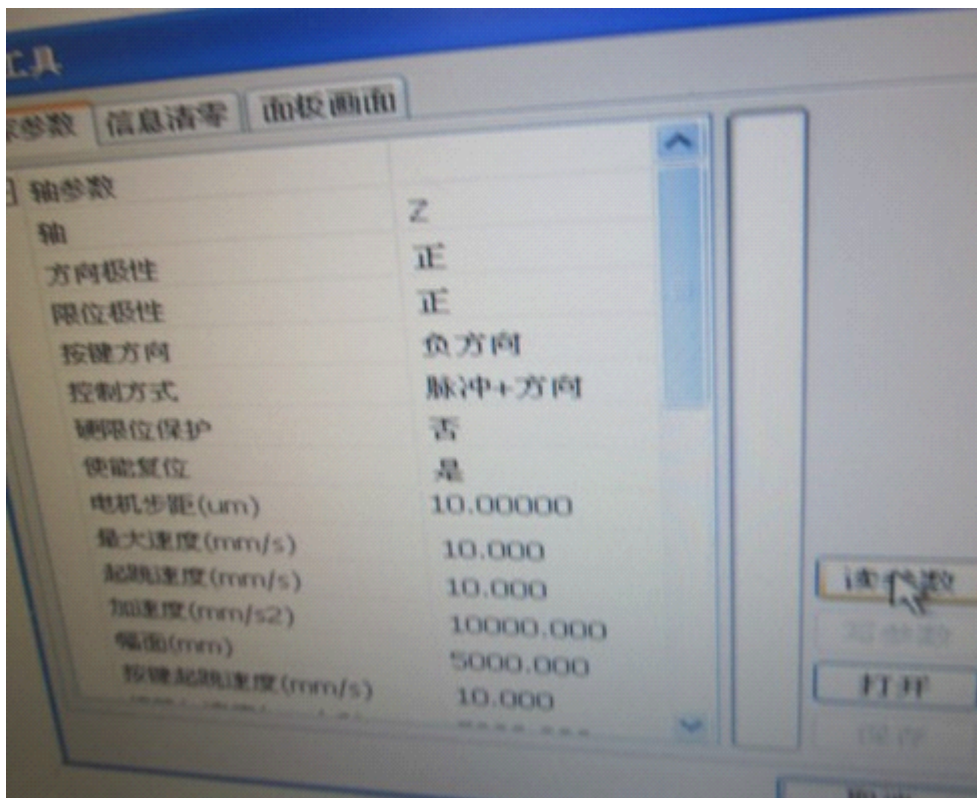




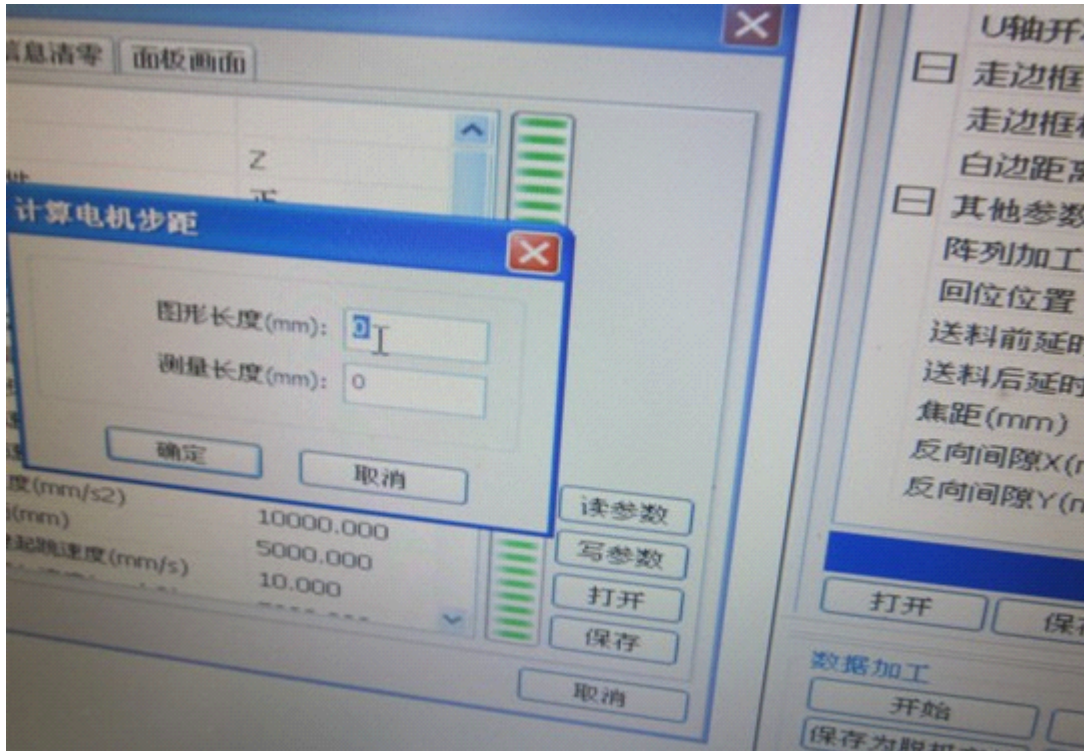
5.Setting software:



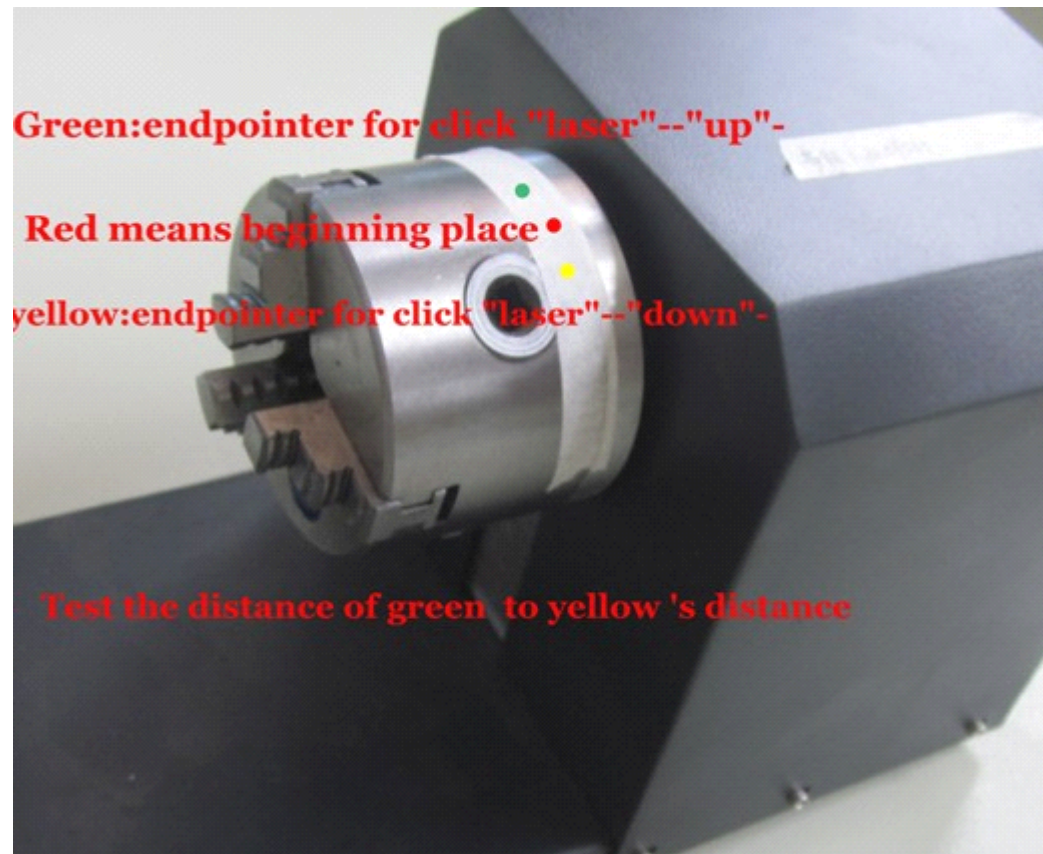
- A. Manufacturers parameter password
- B. Click "Step-length"



- C. Photo length is the real length of your photo.



Testing length is following one .



Then click confirm